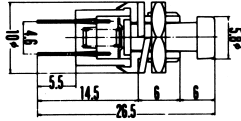




PUSH BUTTON SWITCHES

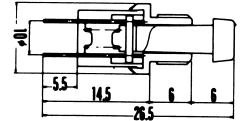
No. MS-312

BABY PUSH BUTTON SWITCH
(PUSH ON TYPE)



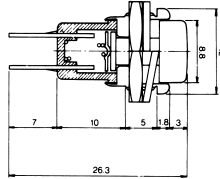
No. MS-313

BABY PUSH BUTTON SWITCH
(PUSH OFF TYPE)



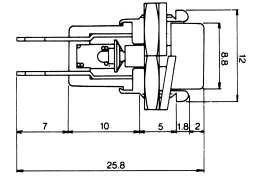
No. MS-350

MINIATURE PUSH BUTTON SWITCH
(PUSH ON TYPE)



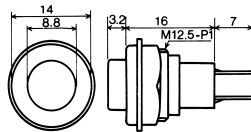
No. MS-351

MINIATURE PUSH BUTTON SWITCH
(PUSH OFF TYPE)



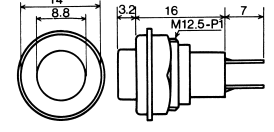
No. MS-350M

MINIATURE PUSH BUTTON SWITCH (PUSH ON TYPE)
ALL PLASTIC HOUSING



No. MS-351M

MINIATURE PUSH BUTTON SWITCH (PUSH OFF TYPE)
ALL PLASTIC HOUSING



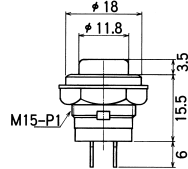
No. MS-356M

PUSH BUTTON SWITCH (PUSH ON TYPE)



Specification

Items	Specification
Circuit arrangement	SPST
Operation mode	OFF-(ON) Momentary
Rating	3A 125V AC
Contact resistance	20m Max
Insulation resistance	100M Min
Withstand voltage	1,000V AC for 1minute



No. MS-357

PUSH BUTTON SWITCH (PUSH ON TYPE)

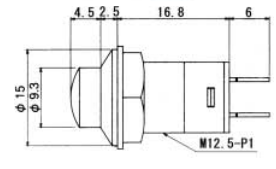
No. MS-358

PUSH BUTTON SWITCH ALTERNATE
(PUSH ON, PUSH OFF TYPE)



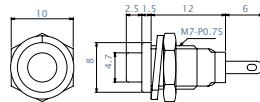
Specification

Items	Specification
Circuit arrangement	SPST
Operation mode	MS-357 OFF-(ON) Momentary MS-358 OFF-ON Alternate
Rating	3A 125V AC
Contact resistance	20m Max
Insulation resistance	100M Min
Withstand voltage	1,000V AC for 1 minute



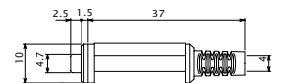
No. MS-300

MINIATURE PUSH BUTTON SWITCH (PUSH ON TYPE)
超小型プッシュスイッチ



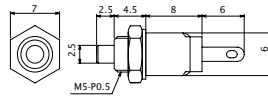
No. MS-400

MINIATURE INLINE PUSH BUTTON SWITCH (PUSH ON TYPE)
超小型手元プッシュスイッチ



No. MS-311

MINIATURE PUSH BUTTON SWITCH (PUSH ON TYPE)
超小型プッシュスイッチ

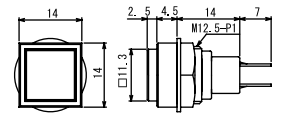


No. MS-370M

PUSH BUTTON SWITCH (PUSH ON TYPE)

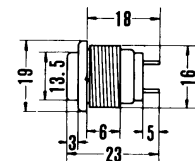
No. MS-371M

PUSH BUTTON SWITCH (PUSH OFF TYPE)



No. MS-327

PUSH BUTTON SWITCH (2P)
(PUSH ON TYPE)
Rating : 125 Volts 3 Amp.





PUSH BUTTON SWITCHES

No. MS-380

PUSH BUTTON SWITCH (PUSH ON TYPE)

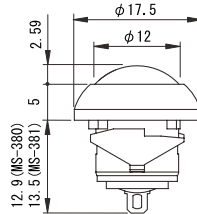
No. MS-381

PUSH BUTTON SWITCH (PUSH OFF TYPE)



Body Color : Black
Cap Color : Black / Red

SNAP-IN MOUNT TYPE
スナップインタイプ

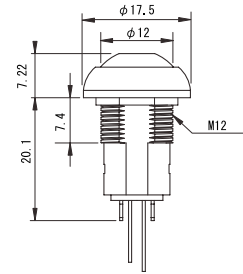


No. MS-384L

PUSH BUTTON SWITCH W/LED
(PUSH ON - PUSH OFF : ALTERNATE TYPE)



ILLUMINATED
照光式



Model No	Body Color	Cap Color	LED Color
MS-384L1#1	Black	Black	Red
MS-384L1#2	Black	Black	Blue
MS-384L1#3	Black	Black	Green
MS-384L0#1	Black	Red	Red
MS-384L0#2	Black	Red	Blue
MS-384L0#3	Black	Red	Green

No. MS-382

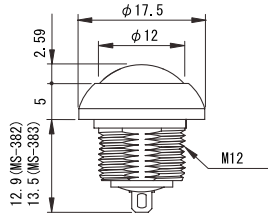
PUSH BUTTON SWITCH (PUSH ON TYPE)

No. MS-383

PUSH BUTTON SWITCH (PUSH OFF TYPE)



Body Color : Black
Cap Color : Black / Red



Specifications

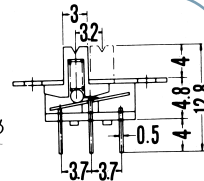
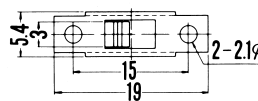
Items	Specification
Rating	MS-380 ~ 383 : 125V AC 125mA / 32V AC 400mA / 50V DC 100mA MS-384L : 125V AC 2A / 24V DC 100mA
Contact resistance	50mΩmax
Insulation resistance	1,000 MΩ at 500V DC
Dielectric strength	1,000 V AC for 1 minute
Panel thickness	MS-380 , 381 : t 0.8mm ~ t 1.8mm MS-382 ~ 384L : t 1.5mm ~ t 4.0mm



SLIDE SWITCHES

No. MS-280

3P MINIATURE SLIDE SWITCH
(P 2T)



Marushin electric mfg. co., ltd